



# Solutions for Green Tire Transport

Motor-Driven Conveyor Rollers and Controls





# MDR Controller Triggers Rocking Motion

## ZoneLink<sup>3</sup> Green Tire Controller

Part of the ZoneLink<sup>®</sup> family, this zero-pressure accumulation (ZPA) green tire controller is equipped with pre-programmed, on-board tire rocking logic. The software directs motor-driven rollers to rock back and forth within the zone during accumulation to prevent the uncured tires from sticking to the rollers, causing deformation.

The rocking rate can be set from continuous to once every 10 minutes. Also adjustable, travel speed during rocking is set at a slower rate than standard transit time. To account for variances in zone length, travel time in reverse is also adjustable. Once time in reverse is reached, the tire advances back to the photosensor at the slower speed. If accumulation is still required, the cycle repeats until the zone ahead is clear, then the tire travels to the next zone in standard ZPA mode.



The ZoneLink<sup>3</sup> Green Tire Controller's rocking mode can be seen in action at [holjeron.com/tirerocking](http://holjeron.com/tirerocking)

## Key Features:

- 6 PNP configurable auxiliary I/O points for enhanced diagnostics and control
- Configurable rocking logic
- Built-in ZPA logic with slave, manual and train modes
- RJ-11 auto-sensing ports for easy installation of NPN or PNP sensors
- Advanced diagnostics detect missing or non-functional sensors
- Rotary speed selector for easy speed adjustment
- Configurable seek mode at power-up detects if a load is in the zone, but not blocking the sensor
- Compatible with Interroll 6- and 8-pole motorized rollers
- Fully compatible with all ZoneLink Microrollers

Holjeron designs, engineers and manufactures motor-driven rollers (MDR) and controllers for conveyORIZED handling of uncured (green) tires. These products easily integrate into conveyor lines moving tires as they exit the tire-building machine (TBM) and travel to curing molds, preventing adhesion and deformation.

Visit [holjeron.com/products/greentire](http://holjeron.com/products/greentire) for more information.

## SmartRoller Drives Intralox Series 900 Belt

### SmartRoller® Square Shell Motorized Rollers

These motor-driven rollers are engineered with a 2.5-inch square shell to accommodate Intralox's Series 900 6.1-inch (18T sprocket tooth configuration) natural acetal square bore sprocket-driven belts—widely used on conveyors that move tires between building and curing processes.

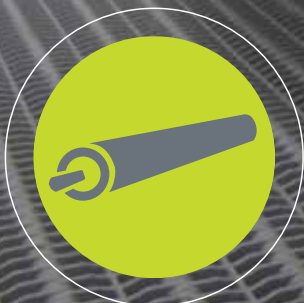
Because of the belts' open grid-and-slat construction, very little of their surface comes in contact with the tires. Their surface easily releases the rubber at the end of the zone to prevent tire deformation caused by adhesion to the belt.



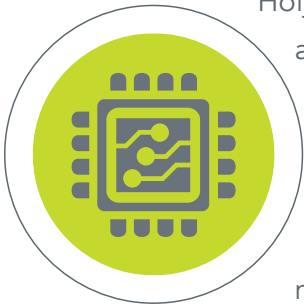
Square Bore Sprocket SmartRollers are built to order and readily available, with delivery lead times of 10 days or less.

### Key Features:

- Unique square shell and sprocket design
- Higher temperature ratings and longer lifespans than competitive units
- Four-sided sprocket engagement permits conveyance of the largest and heaviest tires
- Reaches recommended linear speeds up to 300 feet-per-minute (or higher)
- Supports multiple speed ranges
- High-torque, brushless, 24-volt direct current (VDC) motor with permanently lubricated planetary gear reduction drive for maintenance-free operation
- Fully compatible with all ZoneLink<sup>3</sup> controllers



# Plug it in. It works.



Holjeron, a part of Matthews Automation Solutions, designs, engineers and manufactures brains for industrial automation equipment and material handling systems—including conveyors and motor-driven rollers. Original equipment manufacturers (OEMs) and system integrators appreciate that every Holjeron control device and component is plug-and-play for fast installation, minimal maintenance and expanded diagnostics.

Each of our innovative products is based on industry-standard technologies, including Controller Area Network (CAN technology, to support DeviceNet™, Smart Distributed System (SDS), CANopen, Ethernet I/P and AS-i protocols in industrial automation.

As the in-house designer and manufacturer of our entire product line, your control device or component can be customized specifically to meet the unique requirements of your application—while providing maximum return on your investment. We offer full support for all of our products, including legacy Holjeron components that have been retired, but still provide critical functionality in the systems they support.



27520 SW 95th Avenue  
Wilsonville, Oregon 97070  
U.S.A.

Tel: 503.582.0820  
Toll Free: 800.691.8302  
Fax: 503.582.9166

info@holjeron.com  
holjeron.com



**Matthews™**  
AUTOMATION SOLUTIONS

Holjeron | A part of Matthews Automation Solutions  
Matthews Automation Solutions is a (MATW) Matthews International company.  
© 2017 Holjeron. All rights reserved.